



# GOVT. DEGREE COLLEGE

(AFFILIATED TO KRISHNA UNIVERSITY)

AVANIGADDA, NAAC-B

ISO 50001: 2011, ISO 14001:2015, ISO 9001:2015

## Student Satisfactory Survey

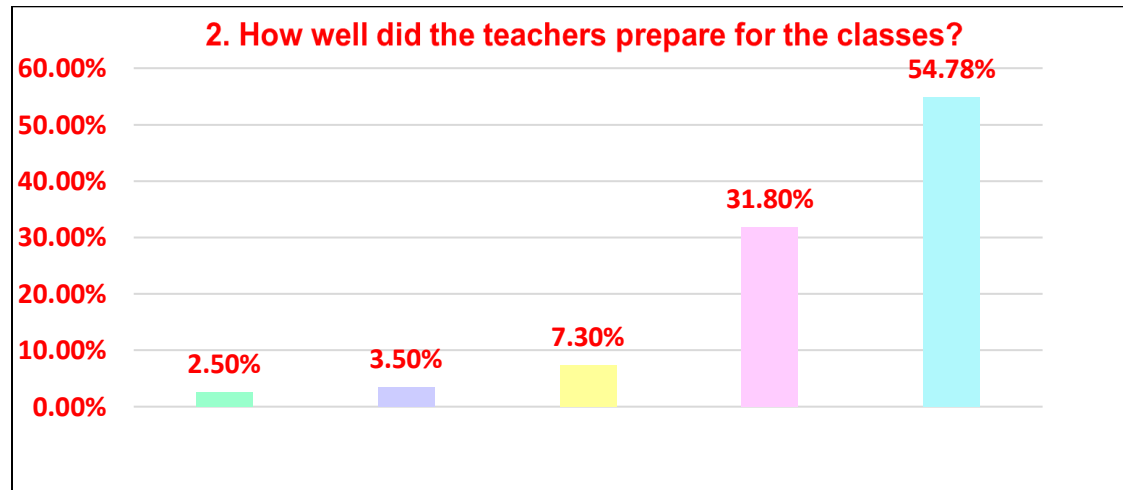
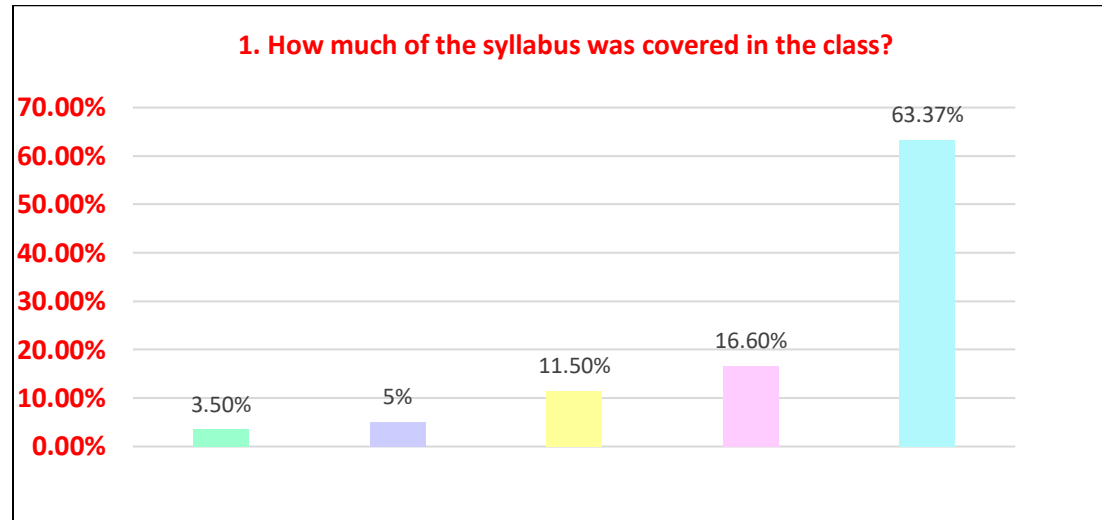
Academic Year 2020-2021

S.NO	Question	2020-2021				
		0	1	2	3	4
1	How much of the syllabus was covered in the class?	6.00%	6.00%	11.00%	16.00%	61.40%
2	How well did the teachers prepare for the classes?	6.00%	3.40%	6.00%	30.90%	53.80%
3	How well were the teachers able to communicate?	3.50%	3.20%	4.00%	34.00%	55.40%
4	The teacher's approach to teaching can best be described as	5.90%	1.90%	16.70%	18.60%	56.90%
5	Fairness of the internal evaluation process by the teachers	5.30%	1.00%	8.20%	18.50%	66.90%
6	Was your performance in assignments discussed with you?	4.20%	1.70%	8.00%	13.90%	71.90%
7	The institute takes active interest in promoting internship, student exchange, field visit opportunities for students.	1.90%	3.20%	14.90%	11.00%	68.90%
8	The teaching and mentoring process in your institution facilitates you in cognitive, social and emotional growth.	4.30%	3.00%	6.20%	34.20%	51.90%
9	The institution provides multiple opportunities to learn and grow.	4.00%	2.30%	8.00%	31.50%	54.00%
10	Teachers inform you about your expected competencies, course outcomes and programme outcomes.	2.90%	3.10%	7.30%	16.60%	69.90%
11	Your mentor does a necessary task to you	5.80%	5.00%	5.00%	18.50%	65.50%
12	The teachers illustrate the concepts through examples	3.80%	3.10%	7.20%	20.20%	65.50%

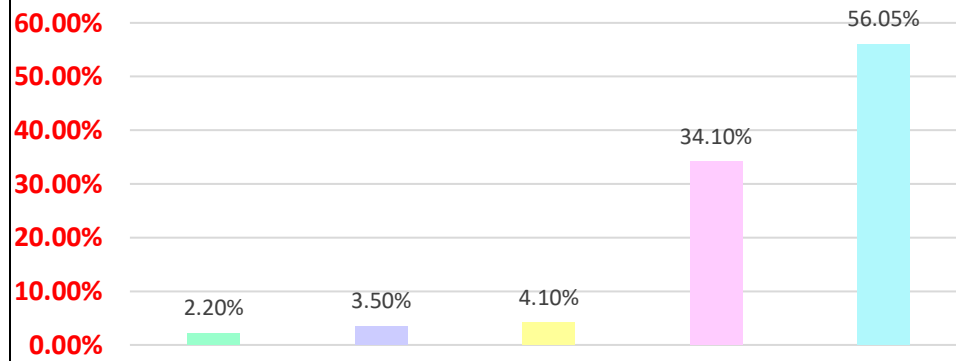
	and applications.					
13	The teachers identify your strengths and encourage you with providing right level of challenges.	<b>6.80%</b>	<b>3.00%</b>	<b>5.00%</b>	<b>19.60%</b>	<b>65.40%</b>
14	Teachers are able to identify your weakness and help you to overcome them.	<b>4.70%</b>	<b>4.20%</b>	<b>4.30%</b>	<b>19.40%</b>	<b>67.10%</b>
15	The institute makes effort to engage students in the monitoring, review and continuous quality improvement of the teaching learning process.	<b>3%</b>	<b>1.40%</b>	<b>4.60%</b>	<b>18.00%</b>	<b>72.80%</b>
16	The institute/teachers use student centric methods, such as experiential learning, participative learning and problem solving methodologies for enhancing learning experiences.	<b>3.30%</b>	<b>6.10%</b>	<b>8.10%</b>	<b>18.00%</b>	<b>64.00%</b>
17	Teachers encourage you to participate in extracurricular activities.	<b>4.90%</b>	<b>3.00%</b>	<b>11.50%</b>	<b>19.60%</b>	<b>61.40%</b>
18	Efforts are made by the institute/teachers to inculcate soft skill, life skills and employability skills to make you ready for the world of work.	<b>5.00%</b>	<b>5.20%</b>	<b>8.00%</b>	<b>22.10%</b>	<b>59.20%</b>
19	What percentage of teachers use ICT tools such as LCD projector, multimedia,etc.,while teaching.	<b>6.90%</b>	<b>2.30%</b>	<b>11.10%</b>	<b>41.10%</b>	<b>38.40%</b>
20	The overall quality of teaching-learning process in your institute is very good	<b>2.90%</b>	<b>2.00%</b>	<b>10.00%</b>	<b>23.90%</b>	<b>60.90%</b>

## Graphical Representation

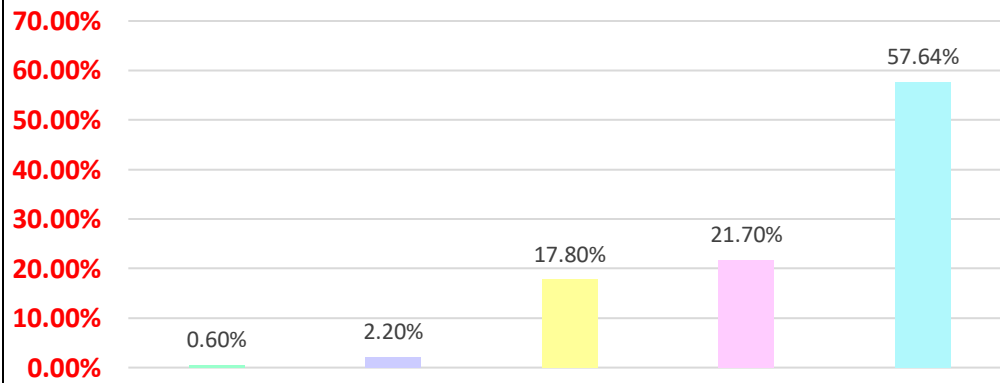
Color indications for options				
Least Rating 0	1	2	3	Top Rating 4



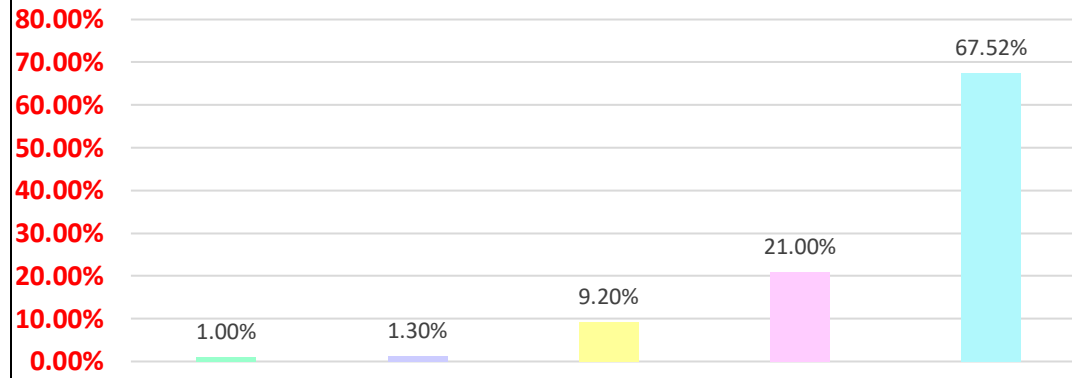
### 3. How well were the teachers able to communicate?



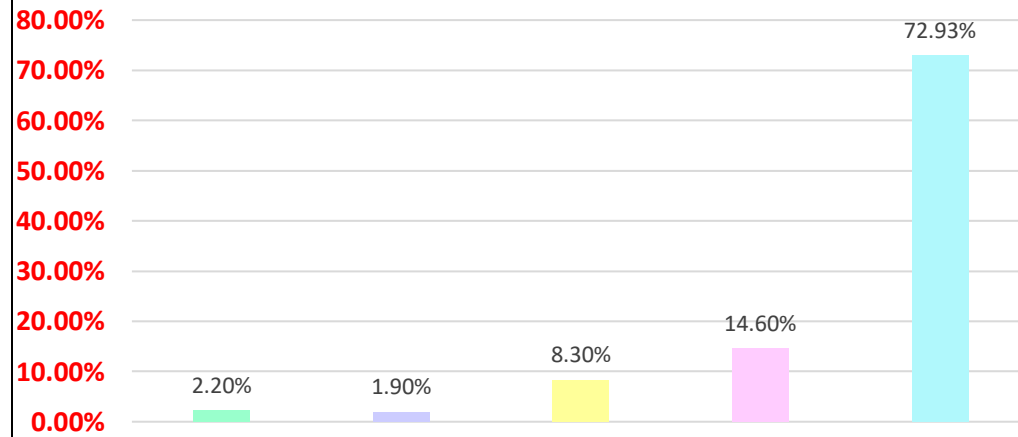
### 4. The teacher's approach to teaching can best be described as



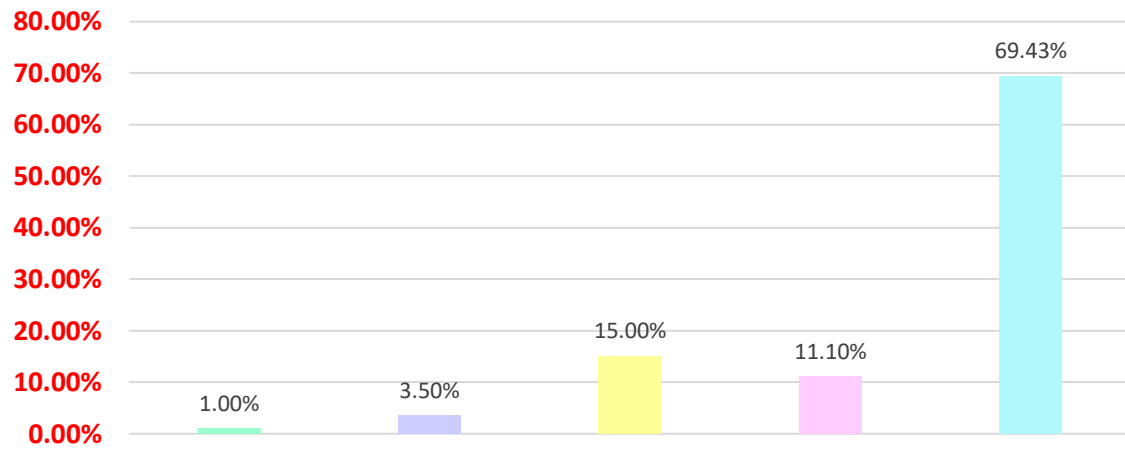
### 5. Fairness of the internal evaluation process by the teachers



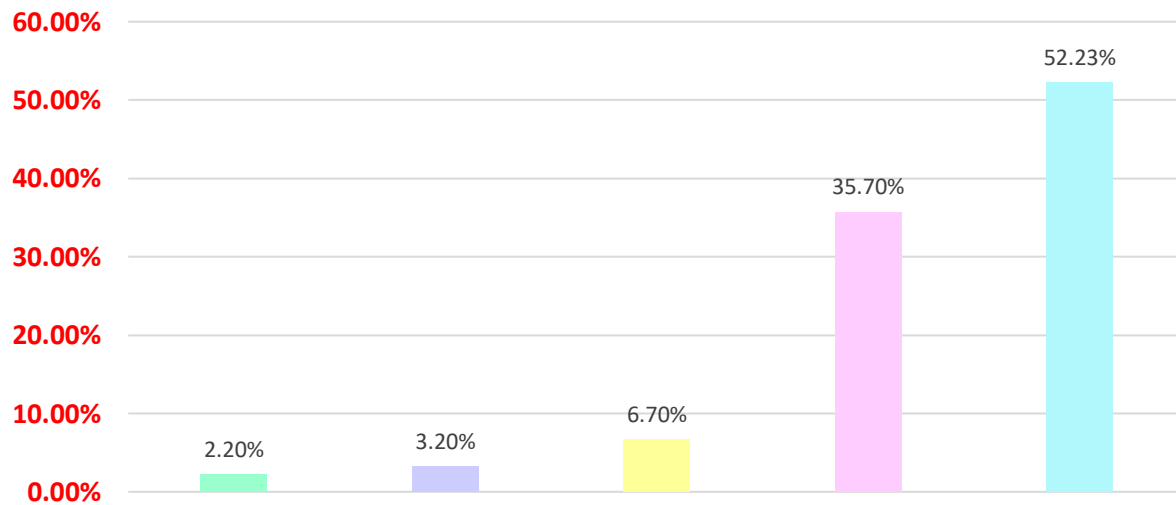
### 6. Was your performance in assignments discussed with you?



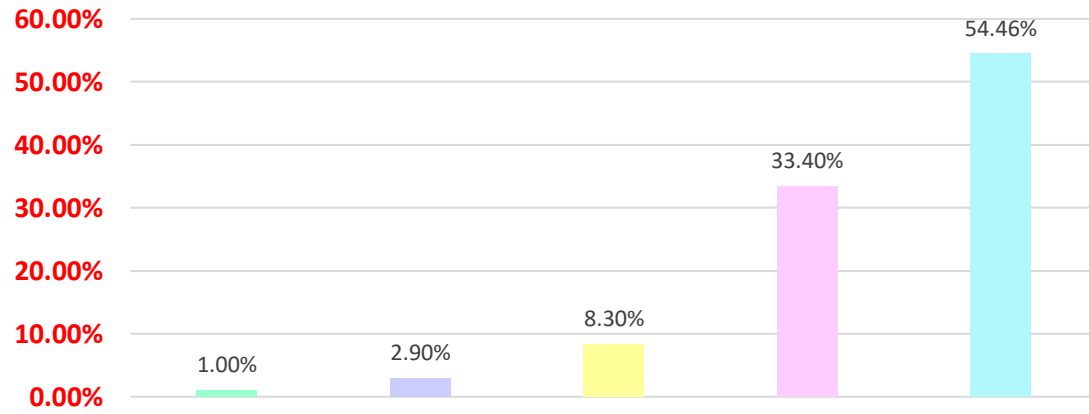
**7. The institute takes active interest in promoting internship, student exchange, field visit opportunities for students.**



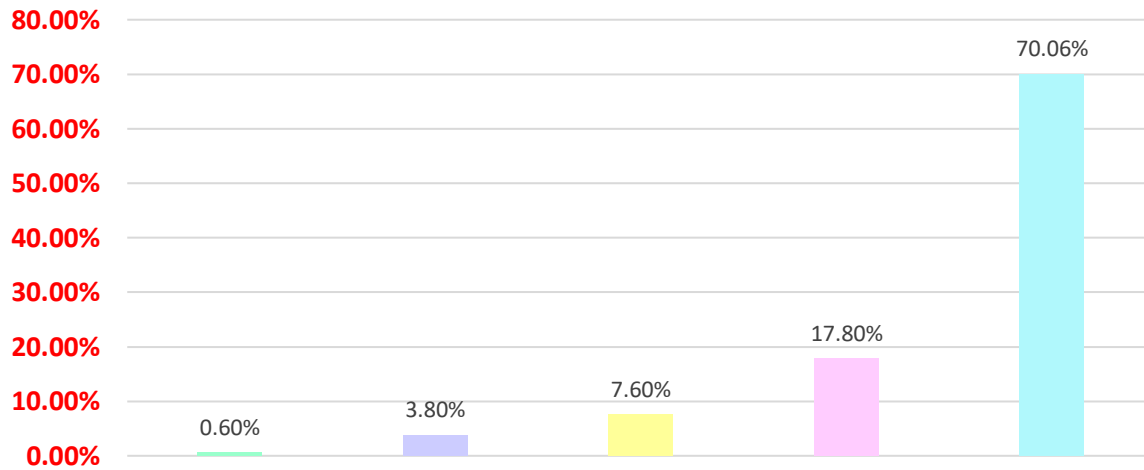
**8. The teaching and mentoring process in your institution facilitates you in cognitive, social and emotional growth.**

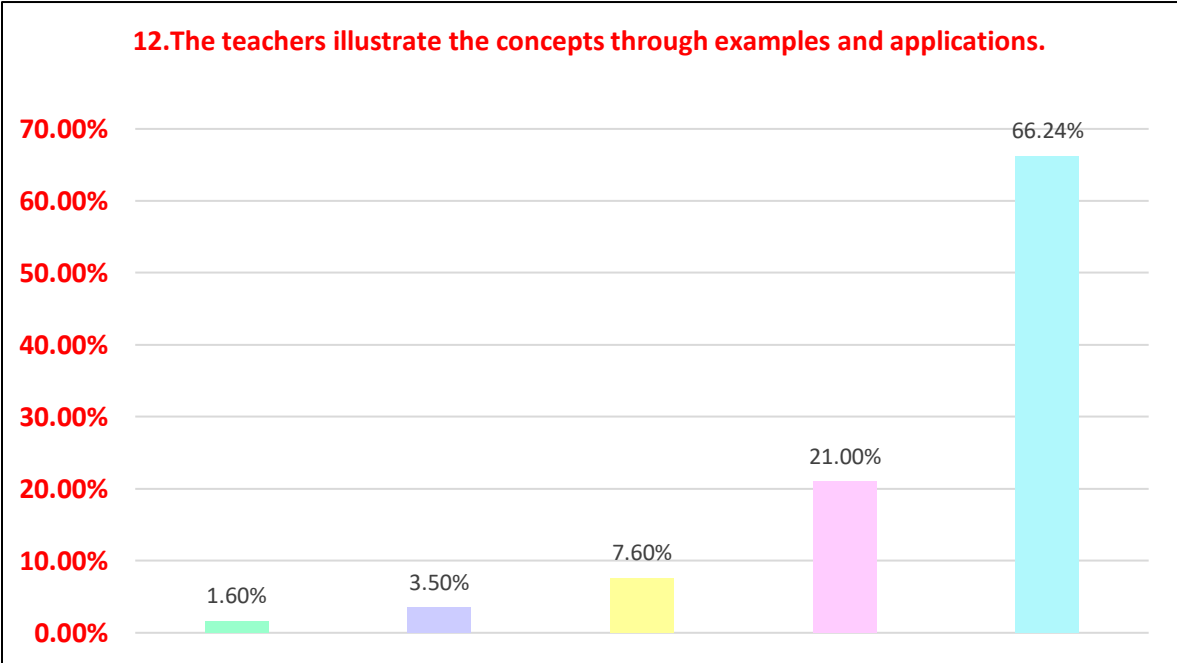
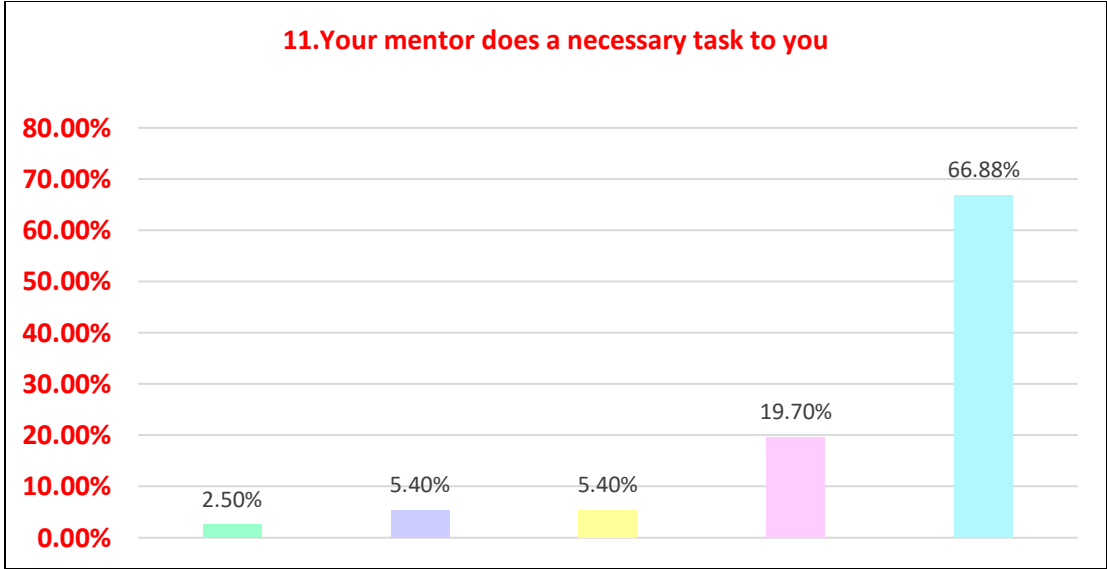


**9. The institution provides multiple opportunities to learn and grow.**



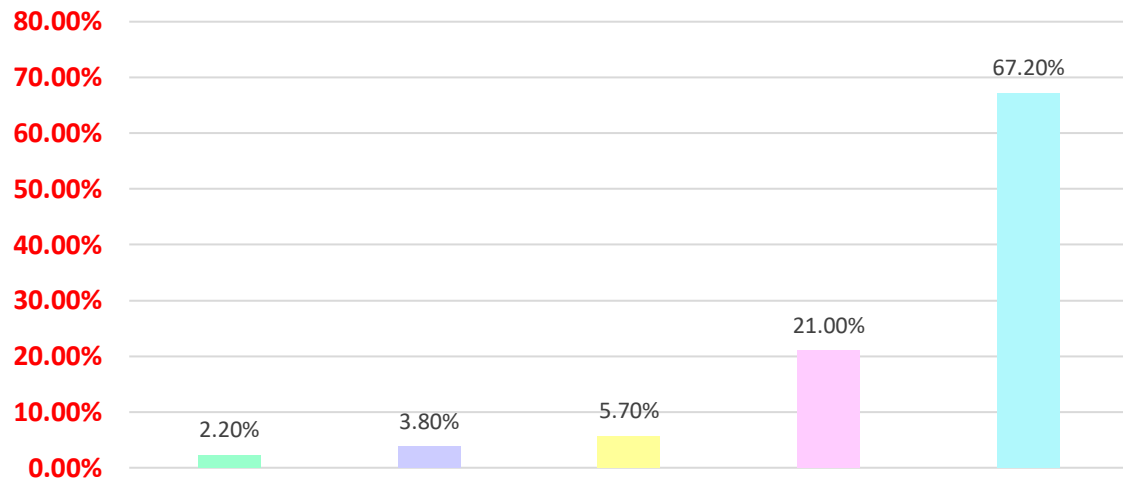
**10. Teachers inform you about your expected competencies, course outcomes and programme outcomes.**



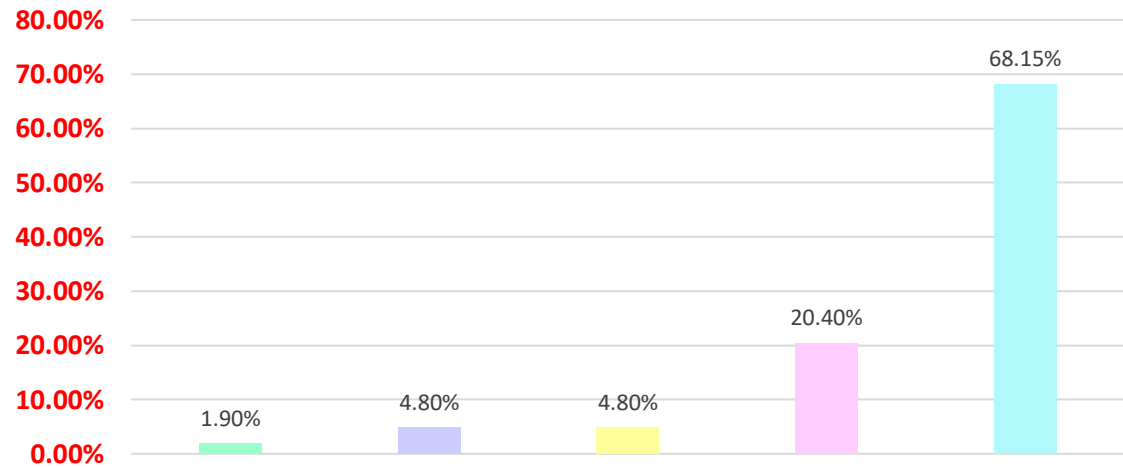




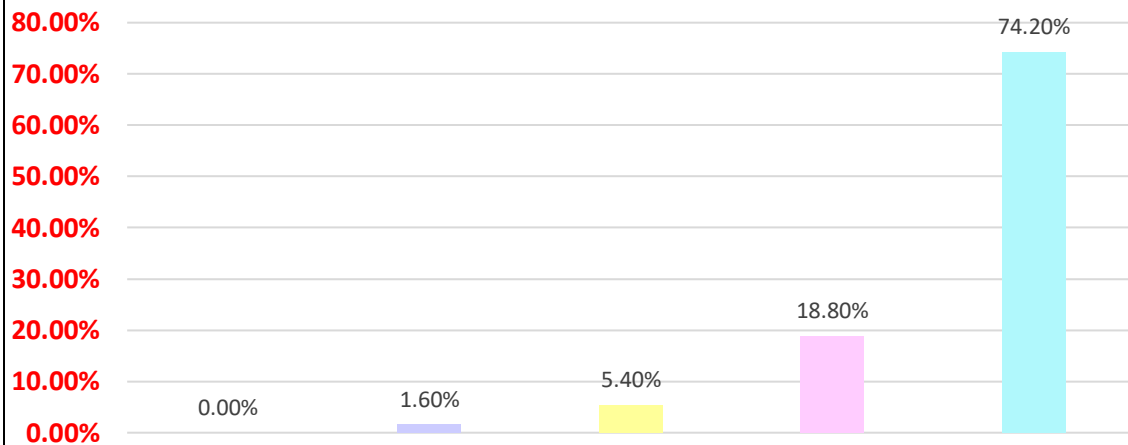
**13.The teachers identify your strengths and encourage you with providing right level of challenges.**



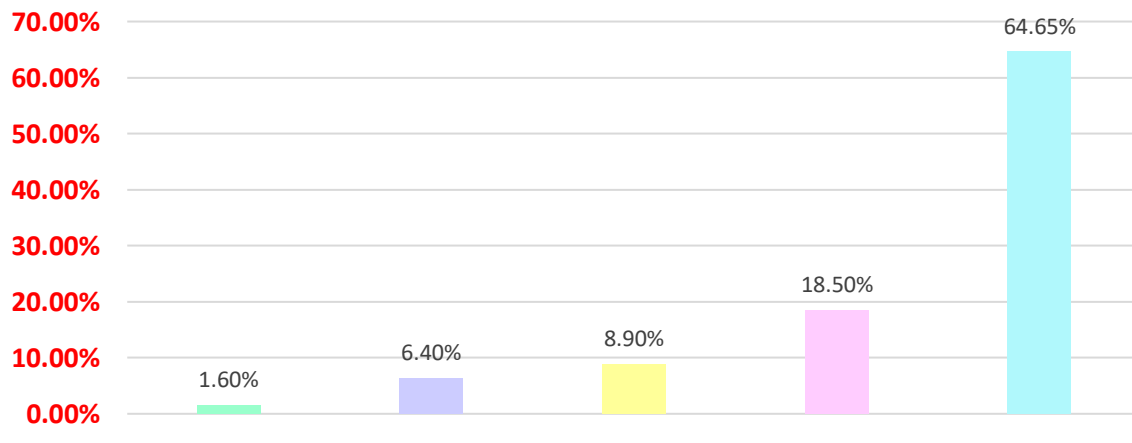
**14.Teachers are able to identify your weakness and help you to overcome them.**



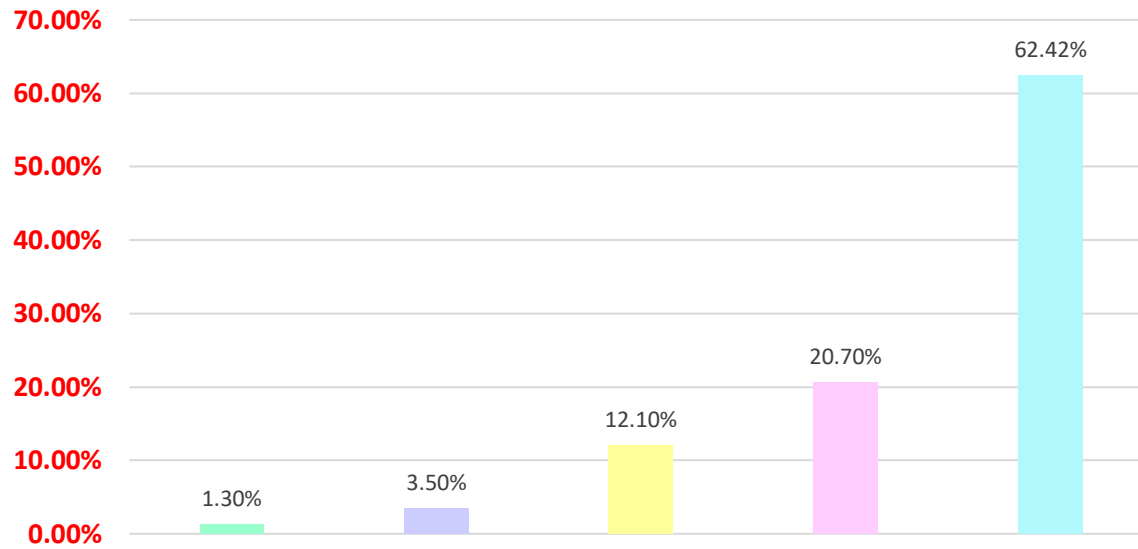
**15.The institute makes effort to engage students in the monitoring, review and continuous quality improvement of the teaching learning process.**



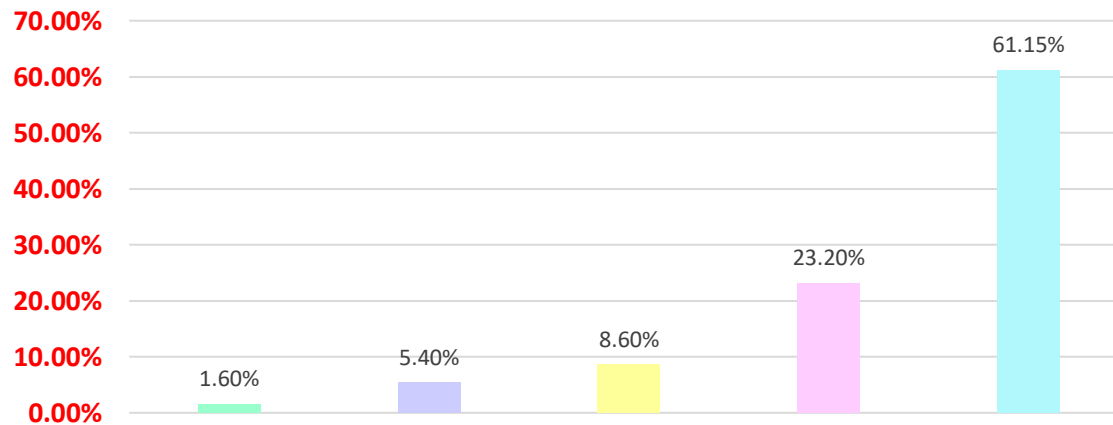
**16.The institute/teachers use student centric methods, such as experiential learning, participative learning and problem solving methodologies for enhancing learning experiences.**



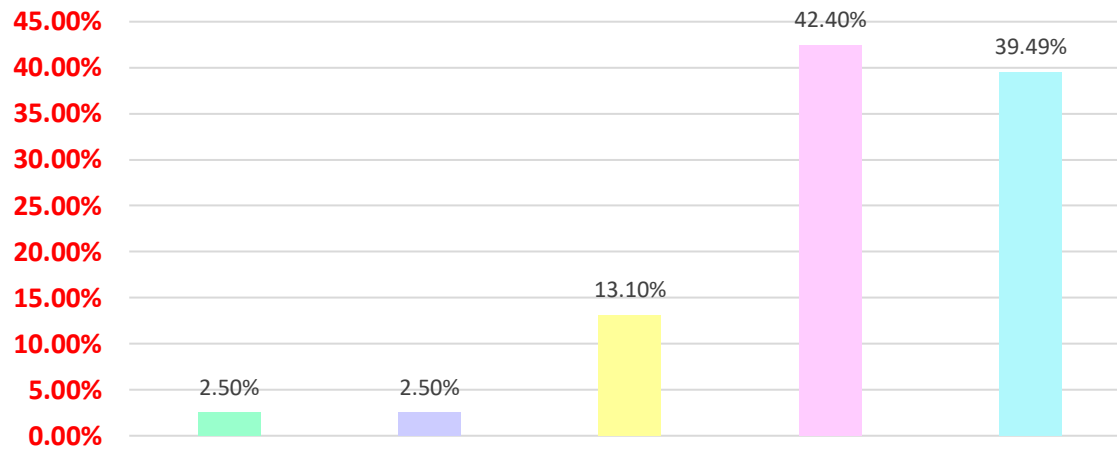
**17. Teachers encourage you to participate in extracurricular activities.**



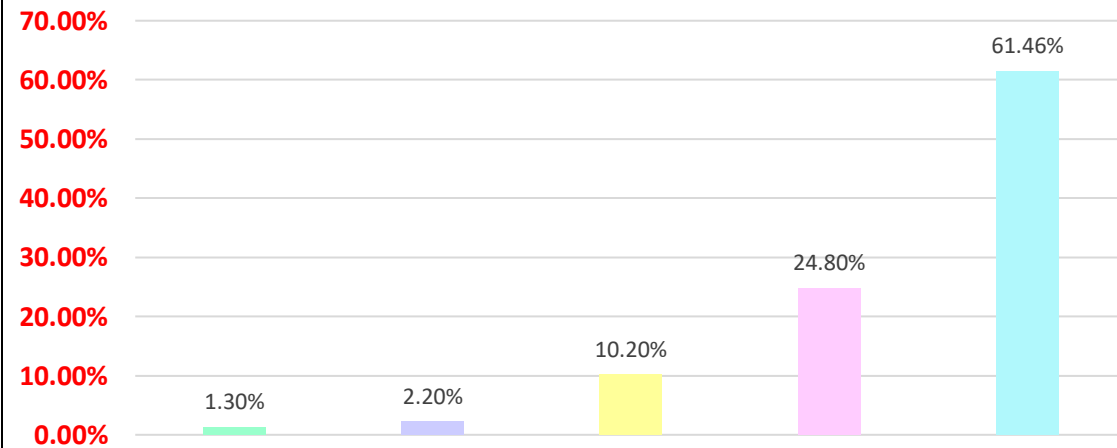
**18. Efforts are made by the institute/teachers to inculcate soft skill, life skills and employability skills to make you ready for the world of work.**



**19. What percentage of teachers use ICT tools such as LCD projector, multimedia, etc., while teaching.**



**20. The overall quality of teaching-learning process in your institute is very good**



### Analysis and Action Taken Report(ATR)

- 1) **Analysis:** - About 61.4% students gave their response that 85% - 100% syllabus is covered, but 6.00% students are dissatisfied with poor syllabus coverage.  
**ATR:** - Enquired the details of less percentage of syllabus coverage and gave counseling to concerned teacher.
- 2) **Analysis:** About 53.80% students gave them response that teaches thoroughly prepares for the classes but 6.00% students have not satisfied about the preparation of class  
**ATR:** - A general meeting was conducted to the teachers who are going to classes with in sufficient preparation and suggested them to prepare well
- 3) **Analysis:** About 55.40% students gave them response that the teacher is communicating thoroughly, but 3.50% students are said that won't teach at all.  
**ATR:** Through a personal intention with students, identified the facility that are not communicating all the related matters to students, and suggested them to communicate the relevant matters to students in time.
- 4) **Analysis:** About 56.90% students gave them response that excellent teachers approach to teaching with best, but 5.90% students are said that poor approach.  
**ATR:** Counseled the teachers to improve their teaching skills by attending FDPS especially on "teaching methodologies".
- 5) **Analysis:** About 66.90% students gave their response that always said in the internal evaluation process by the teachers, but, 5.30% students are dissatisfied with evaluation.  
**ATR:** Directed to students to raise an issue in grievances cell and advice teachers to evaluate the answer scripts carefully.
- 6) **Analysis:** About 71.90% students gave their response that every time the performance in assignment discussed with students but, 4.20% students said that never discussed with them.  
**ATR:** Advice teachers to discuss with the students about the mistakes committed by him/her in presenting assignment.
- 7) **Analysis:** About 68.90% students gave their response that regularly institute takes active interest in promoting internship students exchange etc, but, 1.90% students said that are dissatisfied about this.  
**ATR:** Planned to arrange move number field trips if possible at least one field trip from each department advised faculty to think about students exchange program.
- 8) **Analysis:** About 51.90% students gave them response about emotional growth in the institution but 4.30% students are dissatisfied about the facilities.  
**ATR:** We will try to increase the % of students with effective mentioning system by following of the parents intentions, where ever necessary.
- 9) **Analysis:** About 54.00% students gave their response about multiple opportunities to grow, but 4.00% students are said that strongly disagree  
**ATR:** Planning to introduce certificate/ add on progressive in the coming year.
- 10) **Analysis:** About 69.90% students gave their response  
**ATR:** Try to displace the entire course out comes on the notice board, and also a special class will be taken newly admitted batch by academic in the coming year.

- 11) **Analysis:** About 65.5% students gave their response to every time necessary task but, 5.80% students are dissatisfied about mentor.  
**ATR:** Given suggestions to the mentors to monitor the student regularly.
- 12) **Analysis:** About 65.5% students gave their response every time teachers illustrate the concepts through even & application, but 3.8% students were dissatisfied about this.  
**ATR:** Suggested finally to explain with more illustrations when even available.
- 13) **Analysis:** About 65.4% students gave teachers identify the strengths and encourage, but 6.8% unable to say.  
**ATR:** Suggested teachers to identify strengths of all students.
- 14) **Analysis:** About 67.1% students gave response every time teachers are identifying the weaknesses and help us to overcome, but 4.7% gave response never.  
**ATR:** Suggested teachers to identify their weakness of all students and to encourage them to overcome.
- 15) **Analysis:** About 72.8% students gave response Strongly Agree in improvement of the teaching learning process, but 3.00% students gave strongly disagree.  
**ATR:** Suggested faculty to reviews on CIA.
- 16) **Analysis:** About 64.0% of students gave response to a great extent of student centric methods, but 3.3% students gave response not at all.  
**ATR:** Suggested faculty to introduce innovative teaching methods for the benefit of the students
- 17) **Analysis:** About 61.42% students gave response Strongly Agree to participate in extracurricular activities, but 4.9% of students gave response strongly disagree.  
**ATR:** Suggested faculty to motivate students participate in extracurricular activities and to explain them the importance of these type of achievement in their career.
- 18) **Analysis:** About 59.2% students gave response to a Great Extent to learn about soft skills, life skills and employability skills to make us ready for the world of work, but 5.0% students gave response not at all.  
**ATR:** suggested English faculty to take more number of classes for developing soft & skills if possible in zero hours on in online classes
- 19) **Analysis:** About 38.49% students gave response above 90% of teachers using ICT tools such as LCD projector, Multimedia, etc. while teaching, but 6.9% gave 0-29%.  
**ATR:** Suggested faculty to adopt latest ICT tools for teachers like Blog, Nearpod, Kahoot etc.,
- 20) **Analysis:** About 60.9% students gave response strongly Agree the quality of teaching-learning process in institute is very good, but 2.9% responses is Strongly Disagree.  
**ATR:** Suggested the faculty to check whether the overall teachers learning process is good and to take initiation wherever necessary.