



GOVT. DEGREE COLLEGE

(AFFILIATED TO KRISHNA UNIVERSITY)

AVANIGADDA, NAAC-B

ISO 50001: 2011, ISO 14001:2015, ISO 9001:2015

Student Satisfactory Survey

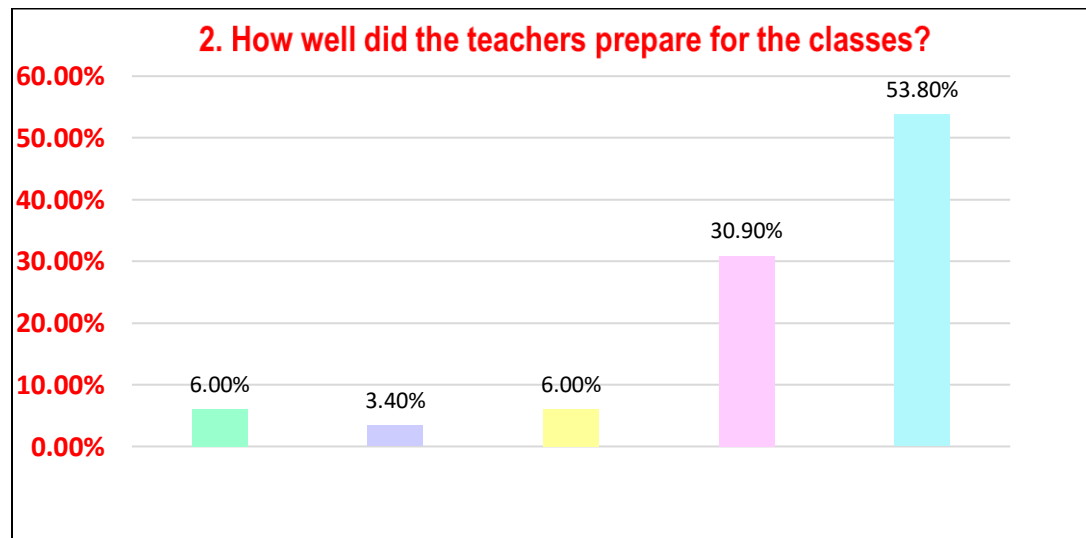
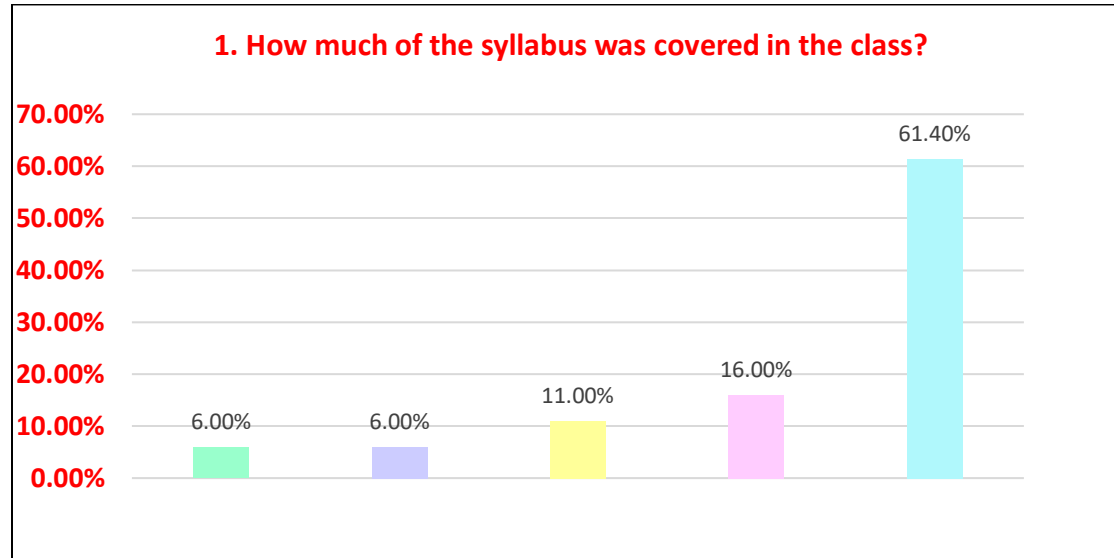
Academic Year 2021-2022

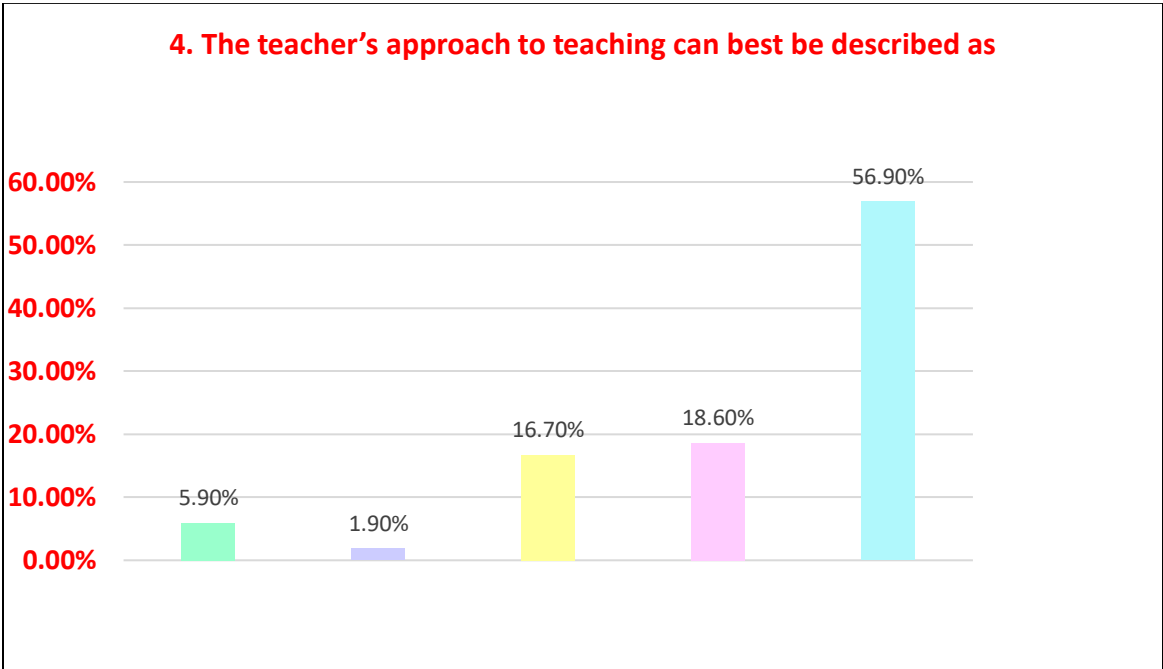
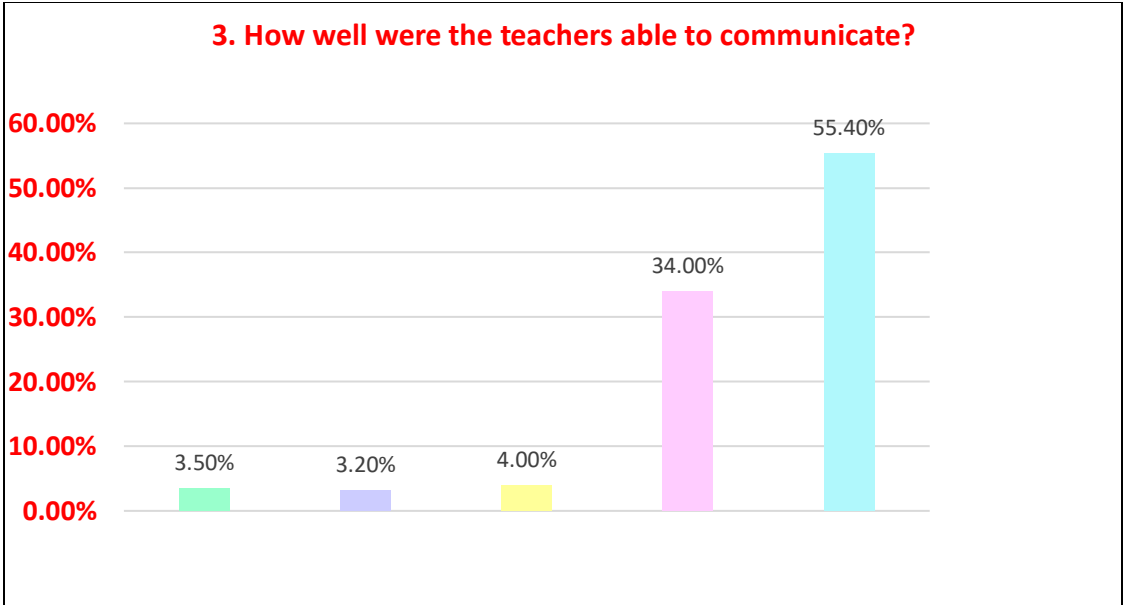
S.NO	Question	2021-2022				
		0	1	2	3	4
1	How much of the syllabus was covered in the class?	3.50%	5%	11.50%	16.60%	63.37%
2	How well did the teachers prepare for the classes?	2.50%	3.50%	7.30%	31.80%	54.78%
3	How well were the teachers able to communicate?	2.20%	3.50%	4.10%	34.10%	56.05%
4	The teacher's approach to teaching can best be described as	0.60%	2.20%	17.80%	21.70%	57.64%
5	Fairness of the internal evaluation process by the teachers	1.00%	1.30%	9.20%	21.00%	67.52%
6	Was your performance in assignments discussed with you?	2.20%	1.90%	8.30%	14.60%	72.93%
7	The institute takes active interest in promoting internship, student exchange, field visit opportunities for students.	1.00%	3.50%	15.00%	11.10%	69.43%
8	The teaching and mentoring process in your institution facilitates you in cognitive, social and emotional growth.	2.20%	3.20%	6.70%	35.70%	52.23%
9	The institution provides multiple opportunities to learn and grow.	1.00%	2.90%	8.30%	33.40%	54.46%
10	Teachers inform you about your expected competencies, course outcomes and programme outcomes.	0.60%	3.80%	7.60%	17.80%	70.06%
11	Your mentor does a necessary task to you	2.50%	5.40%	5.40%	19.70%	66.88%

12	The teachers illustrate the concepts through examples and applications.	1.60%	3.50%	7.60%	21.00%	66.24%
13	The teachers identify your strengths and encourage you with providing right level of challenges.	2.20%	3.80%	5.70%	21.00%	67.20%
14	Teachers are able to identify your weakness and help you to overcome them.	1.90%	4.80%	4.80%	20.40%	68.15%
15	The institute makes effort to engage students in the monitoring, review and continuous quality improvement of the teaching learning process.	0.00%	1.60%	5.40%	18.80%	74.20%
16	The institute/teachers use student centric methods, such as experiential learning, participative learning and problem solving methodologies for enhancing learning experiences.	1.60%	6.40%	8.90%	18.50%	64.65%
17	Teachers encourage you to participate in extracurricular activities.	1.30%	3.50%	12.10%	20.70%	62.42%
18	Efforts are made by the institute/teachers to inculcate soft skill, life skills and employability skills to make you ready for the world of work.	1.60%	5.40%	8.60%	23.20%	61.15%
19	What percentage of teachers use ICT tools such as LCD projector, multimedia,etc.,while teaching.	2.50%	2.50%	13.10%	42.40%	39.49%
20	The overall quality of teaching-learning process in your institute is very good	1.30%	2.20%	10.20%	24.80%	61.46%

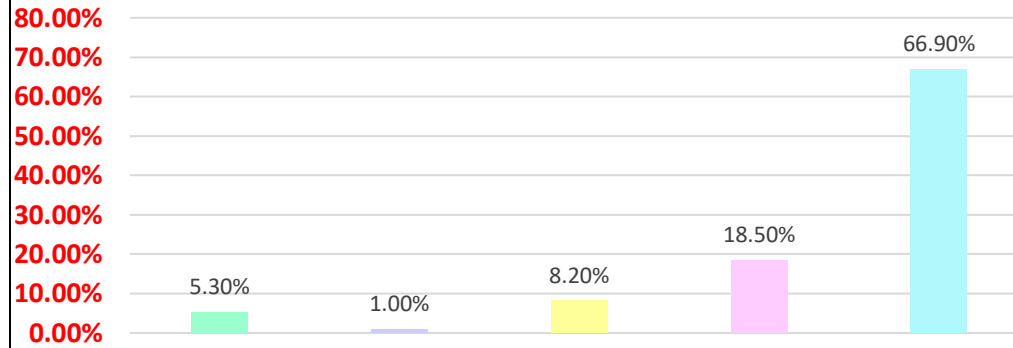
Graphical Representation

Color indications for options				
Least Rating 0	1	2	3	Top Rating 4

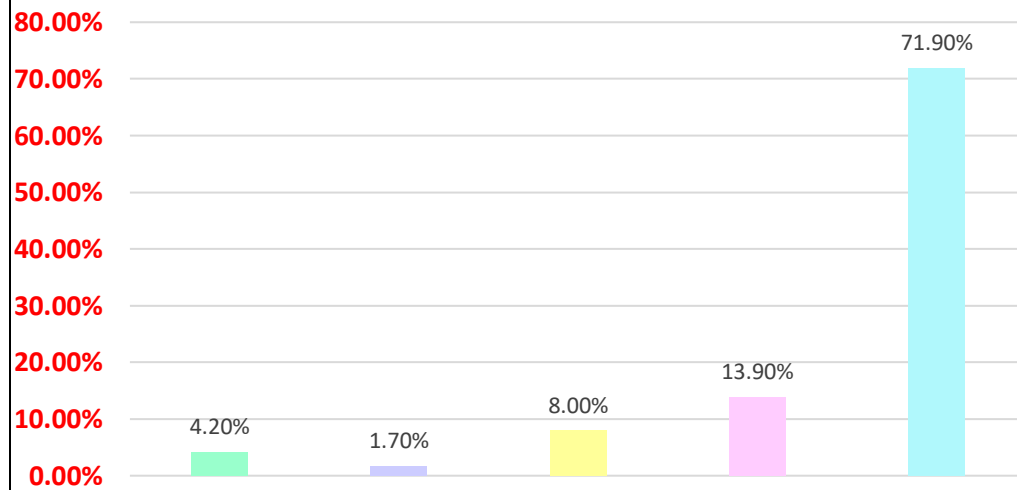




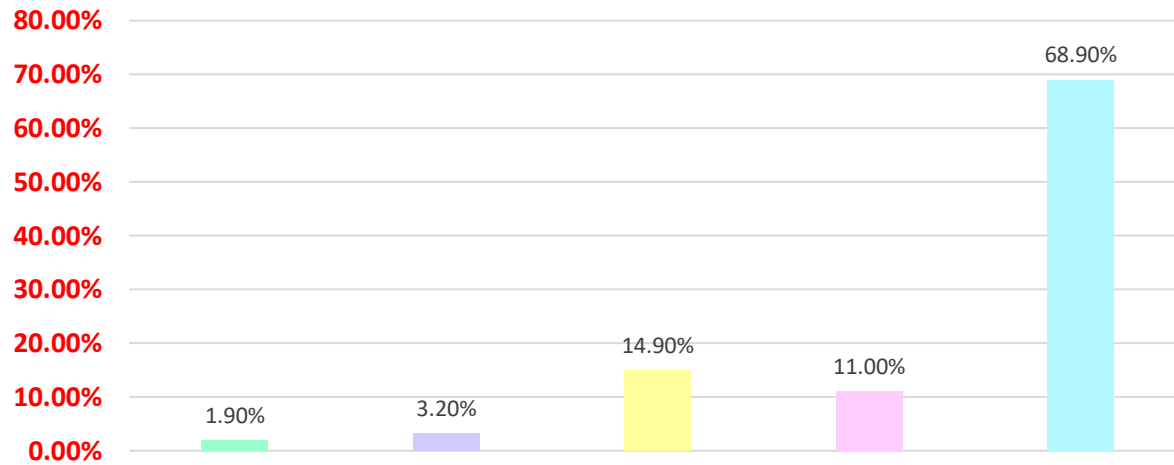
5. Fairness of the internal evaluation process by the teachers



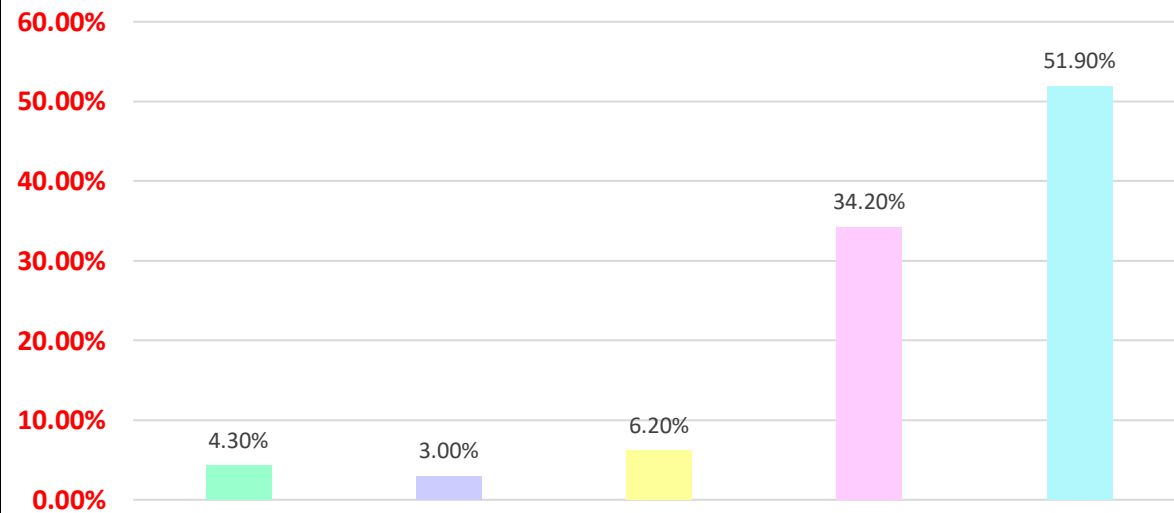
6. Was your performance in assignments discussed with you?

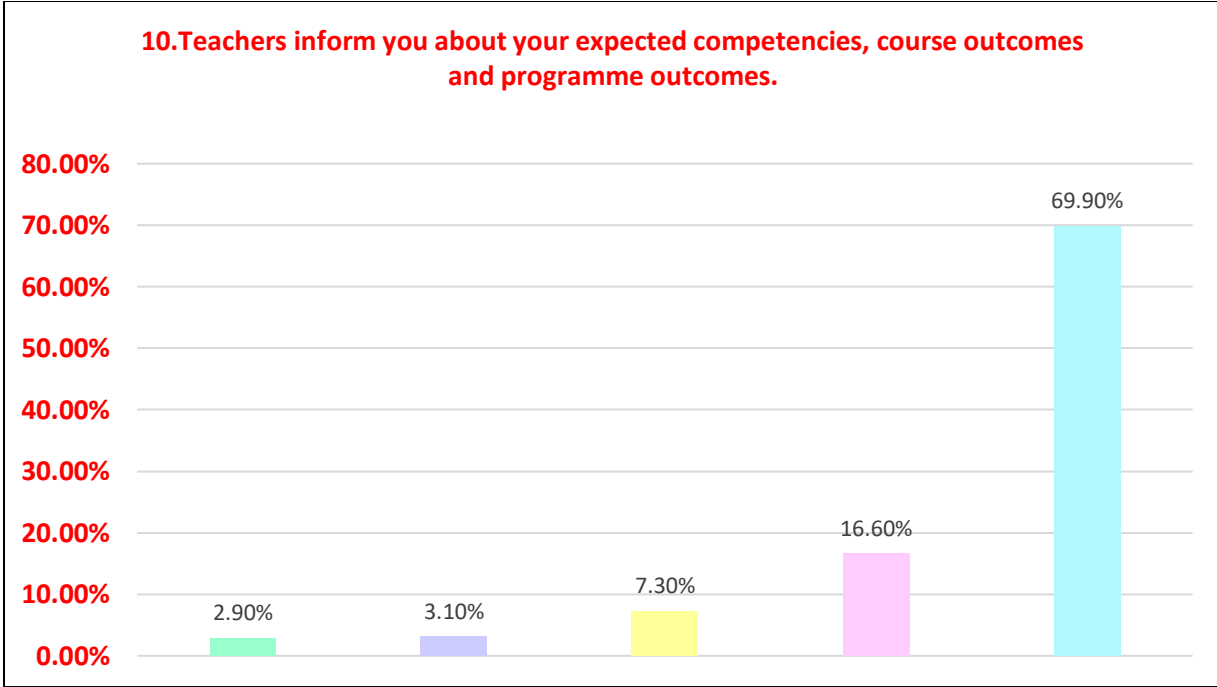
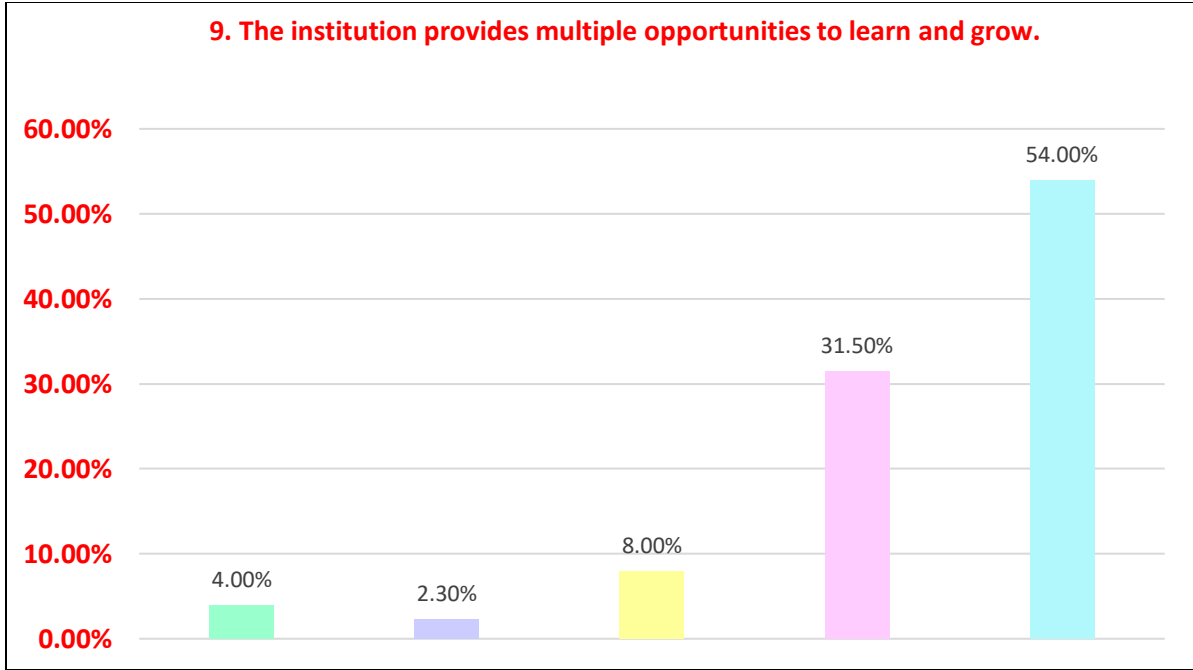


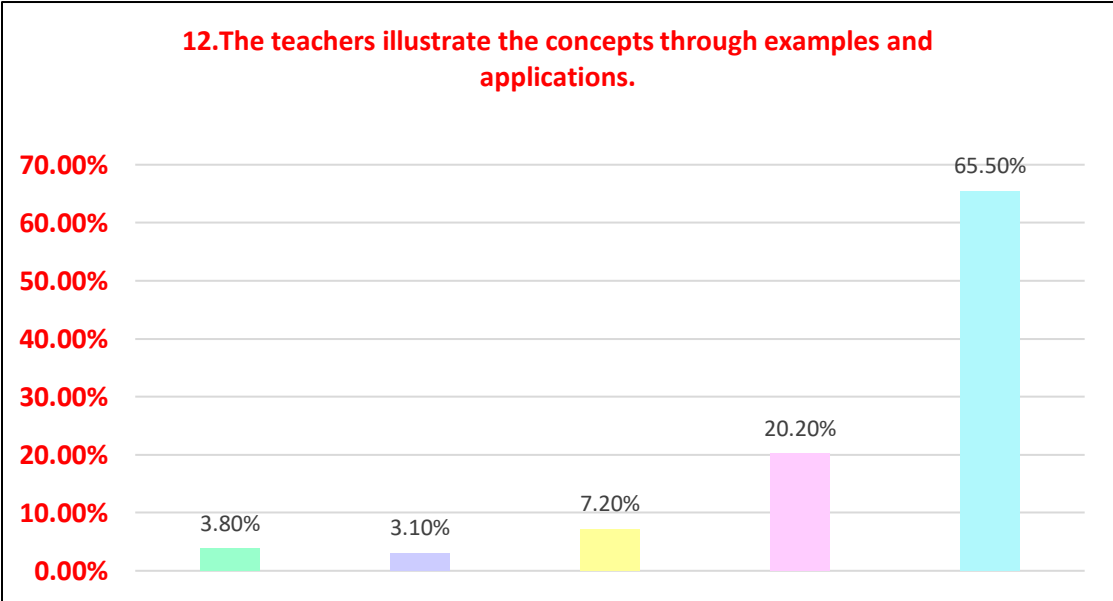
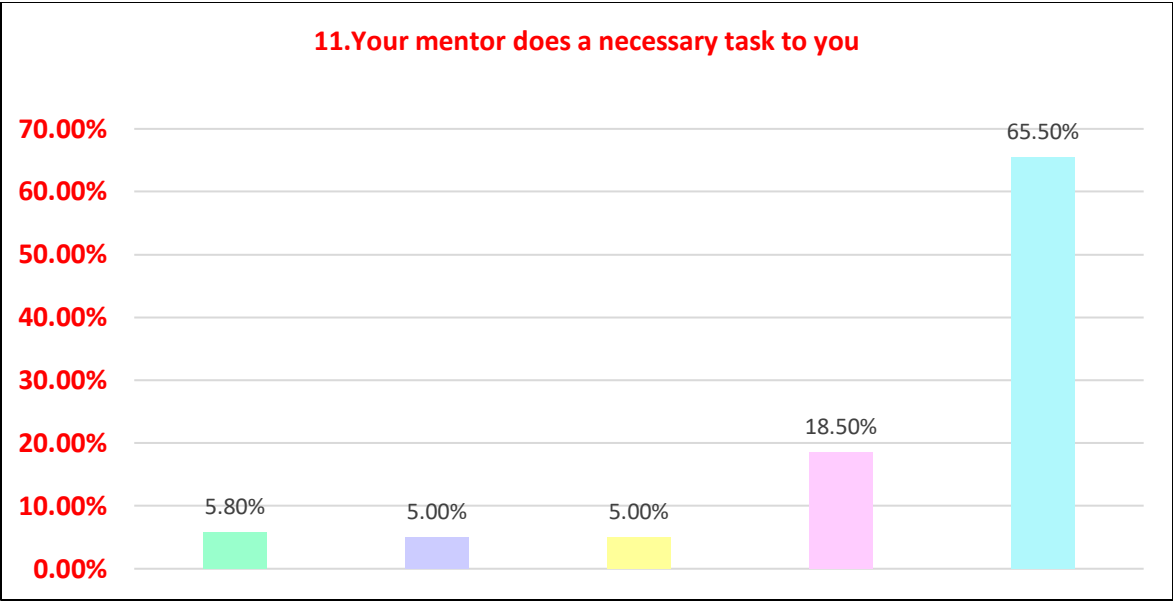
7. The institute takes active interest in promoting internship, student exchange, field visit opportunities for students.



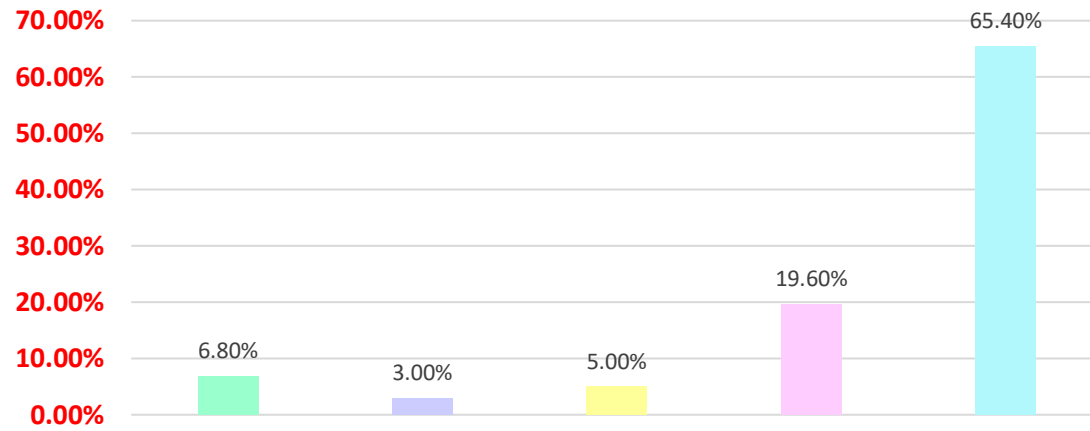
8. The teaching and mentoring process in your institution facilitates you in cognitive, social and emotional growth.



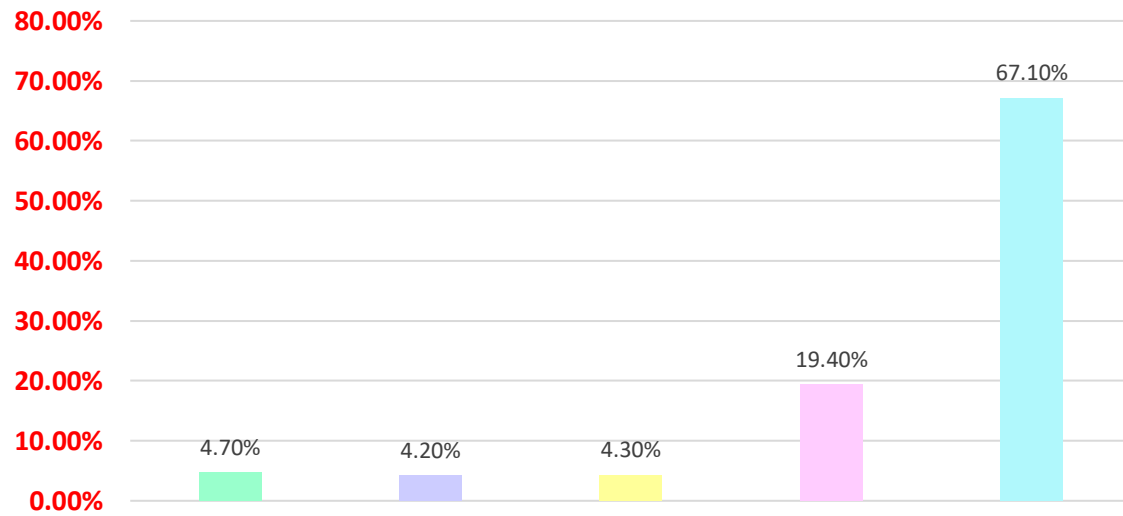




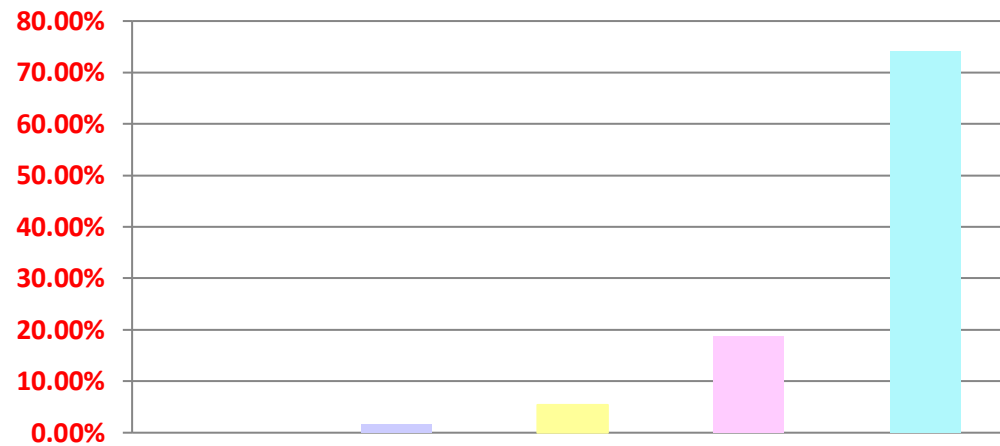
13.The teachers identify your strengths and encourage you with providing right level of challenges.



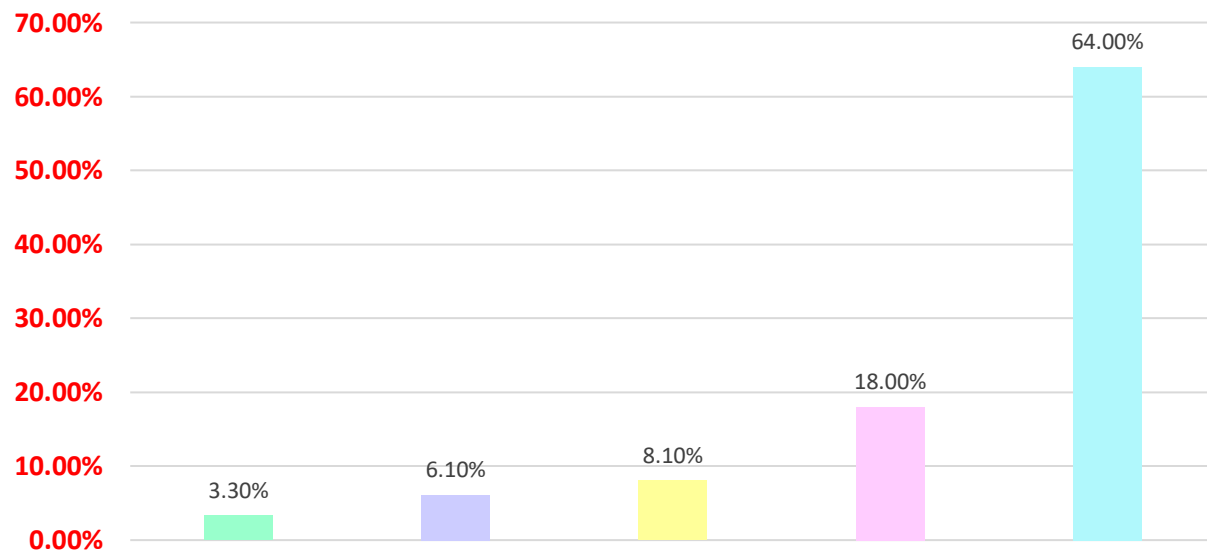
14.Teachers are able to identify your weakness and help you to overcome them.

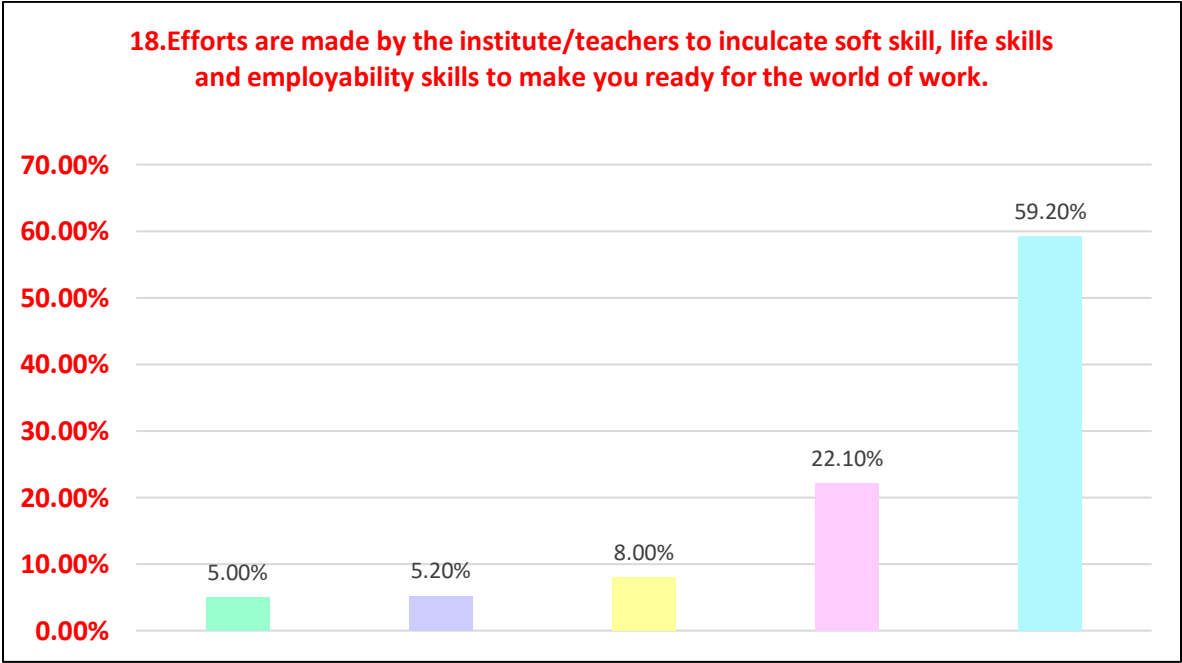
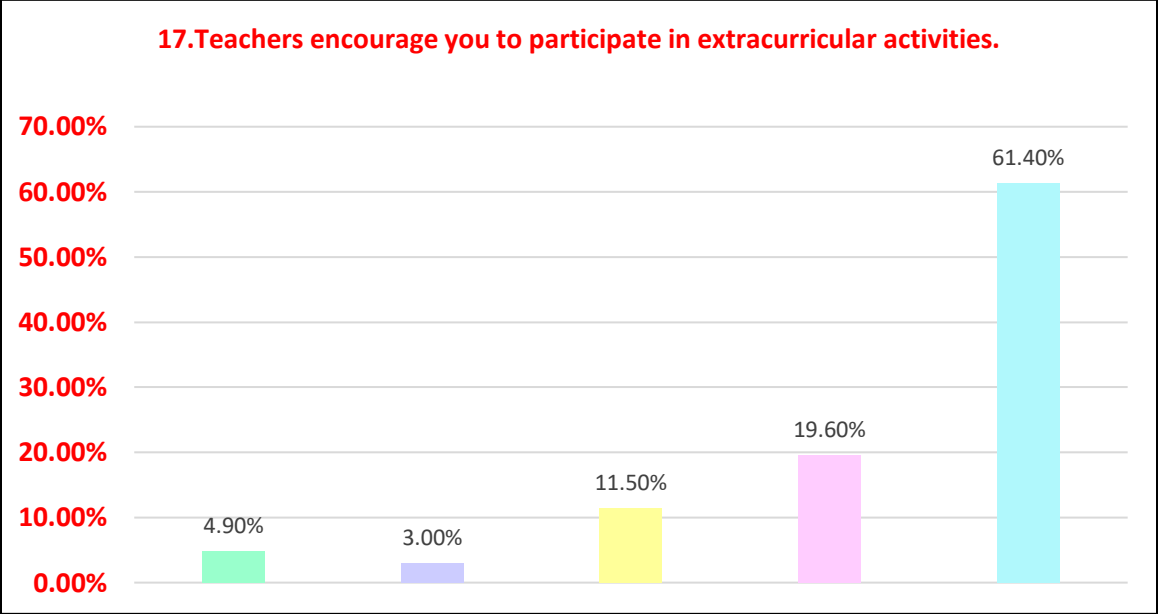


The institution makes effort to encourage students in the monitoring review and continuous quality improvement of the teaching learning process.

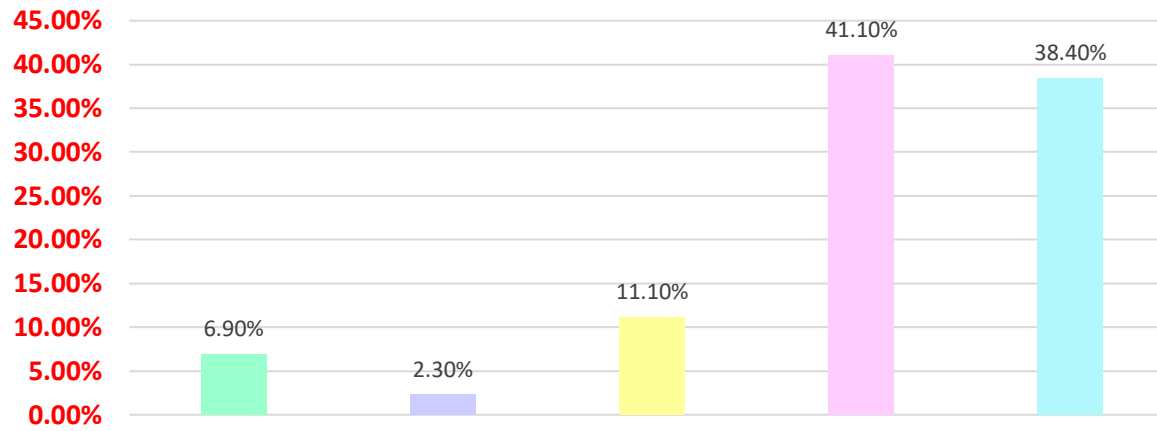


16.The institute/teachers use student centric methods, such as experiential learning, participative learning and problem solving methodologies for enhancing learning experiences.

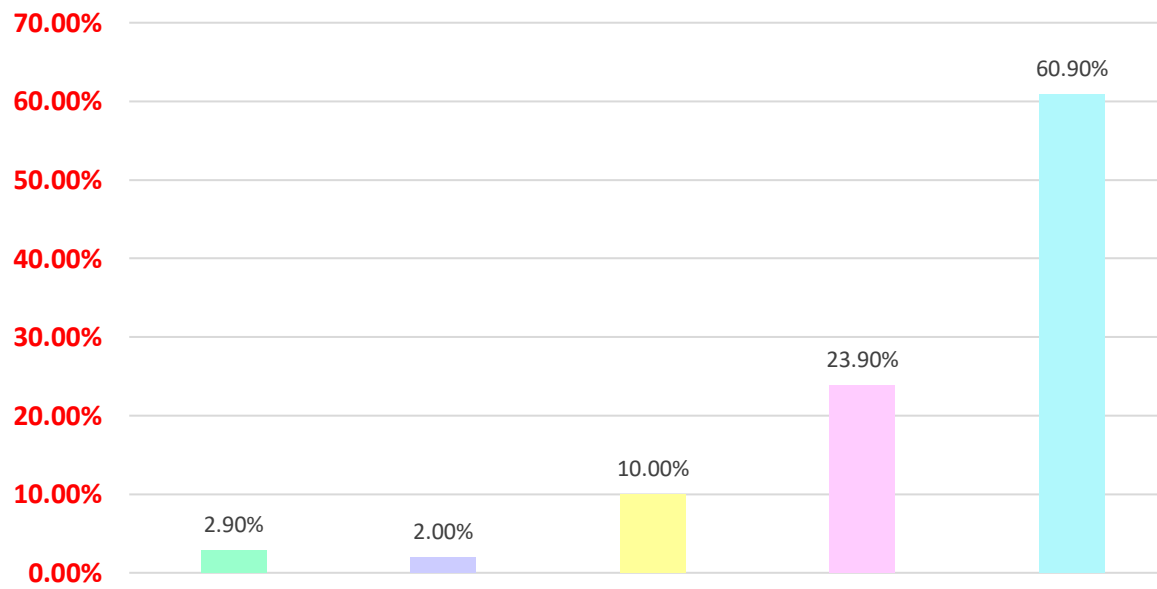




19. What percentage of teachers use ICT tools such as LCD projector, multimedia, etc., while teaching.



20. The overall quality of teaching-learning process in your institute is very good



Analysis and Action Taken Report(ATR)

- 1) **Analysis:** - About 63.37% students gave their response that 85% - 100% syllabus is covered, but 3.50% students are dissatisfied with poor syllabus coverage.
ATR: - Enquired the details of less percentage of syllabus coverage and gave counseling to concerned teacher.
- 2) **Analysis:** About 54.78% students gave them response that teaches thoroughly prepares for the classes but 2.50% students have not satisfied about the preparation of class
ATR: - A general meeting was conducted to the teachers who are going to classes with in sufficient preparation and suggested them to prepare well
- 3) **Analysis:** About 56.05% students gave them response that the teacher is communicating thoroughly, but 2.20% students are said that won't teach at all.
ATR: Through a personal intention with students, identified the facility who are not communicating all the related matters to students ,and suggested them to communicate the relevant matters to students in time.
- 4) **Analysis:** About 57.64% students gave them response that excellent teachers approach to teaching with best, but 0.60% students are said that poor approach.
ATR: Counseled the teachers to improve their teaching skills by attending FDPS especially on "teaching methodologies".
- 5) **Analysis:** About 67.52% students gave their response that always said in the internal evaluation process by the teachers, but 1.00% students are dissatisfied with evaluation.
ATR: Directed to students to raise an issue in grievances cell and advice teachers to evaluate the answer scripts carefully.
- 6) **Analysis:** About 72.93% students gave their response that every time the performance in assignment discussed with students but, 2.20% students said that never discussed with them.
ATR: Advice teachers to discuss with the students about the mistakes committed by him/her in presenting assignment.
- 7) **Analysis:** About 69.43%students gave their response that regularly institute takes active interest in promoting internship students exchange etc, but, 1.00% students said that are dissatisfied about this.
ATR: Planned to arrange move number field trips if possible at least one field trip from each department advised facility to think about students exchange program.
- 8) **Analysis:** About 52.23% students gave them response about emotional growth in the institution but 2.20% students are dissatisfied about the facilities.
ATR: We will try to increase the % of students with effective mentioning system by following of the parents intentions, where ever necessary.
- 9) **Analysis:** About 54.46% students gave their response about multiple opportunities to grow, but 1.00% students are said that strongly disagree
ATR: Planning to introduce certificate/ add on progressive in the coming year.
- 10) **Analysis:** About 70.06% students gave their response.
ATR: Try to displace the entire course out comes on the notice board, and also a special class will be taken newly admitted batch by academic in the coming year.
- 11) **Analysis:** About 66.88% students gave their response to every time necessary task but, 2.50% students are dissatisfied about mentor.
ATR: Given suggestions to the mentors to monitor the student regularly.
- 12) **Analysis:** About 66.24% students gave their response every time teachers illustrate the concepts through even & application, but 1.60% students were dissatisfied about this.

ATR: Suggested finally to explain with more illustrations when even available.

13) **Analysis:** About 67.20% students gave teachers identify the strengths and encourage, but 2.20% unable to say.

ATR: Suggested teachers to identify strengths of all students.

14) **Analysis:** About 68.15% students gave response every time teachers are identifying the weaknesses and help us to overcome, but 1.9% gave response never.

ATR: Suggested teachers to identify their weakness of all students and to encourage them to overcome.

15) **Analysis:** About 74.2% students gave response Strongly Agree in improvement of the teaching learning process, but 13.00% students gave strongly disagree.

ATR: Suggested facility to reviews on CIA.

16) **Analysis:** About 64.65% of students gave response to a great extent of student centric methods, but 1.6% students gave response not at all.

ATR: Suggested faculty to introduce innovative teaching methods for the benefit of the students

17) **Analysis:** About 62.42% students gave response Strongly Agree to participate in extracurricular activities, but 1.3% of students gave response strongly disagree.

ATR: Suggested faculty to motivate students participate in extracurricular activities and to explain them the importance of these type of achievement in their career.

18) **Analysis:** About 61.15% students gave response to a Great Extent to learn about soft skills, life skills and employability skills to make us ready for the world of work, but 1.6% students gave response not at all.

ATR: suggested English faculty to take more number of classes for developing soft & skills if possible in zero hours on in online classes

19) **Analysis:** About 39.49% students gave response above 90% of teachers using ICT tools such as LCD projector, Multimedia, etc. while teaching, but 2.5% gave 0-29%.

ATR: Suggested faculty to adopt latest ICT tools for teachers like Blog, Nearpod, Kahoot etc.,

20) **Analysis:** About 61.46% students gave response strongly Agree the quality of teaching-learning process in institute is very good, but 1.3% responses is Strongly Disagree.

ATR: Suggested the faculty to check whether the overall teachers learning process is good and to take initiation wherever necessary.